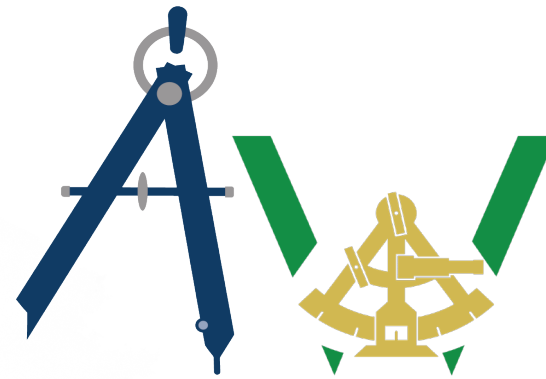


**www.aeccm.com**  
650-397-9260  
San Francisco, CA 94107

**AEC Construction Management** provides seamless program, project, and construction management services. We support the full project lifecycle, from strategic project scoping to design criteria, from procurement support to tenant move-in and closeout. AEC staff have worked extensively on projects throughout California.



DGS SBE (Micro)  
San Francisco Micro-LBE  
Registered Vendor City / County of SF



**AEC Construction Management and Winning CM Strategies provide you with one team to support your program delivery efforts.**

Contact Todd Ravencroft at 650-397-9260 /  
travencroft@aeccm.com  
for teaming opportunities.

**TOGETHER WE PROVIDE:**

- ▶ Full PM/CM Services
- ▶ Owner's Representative
- ▶ Program/Project Construction Scheduling
- ▶ Estimating
- ▶ Collaborative Time Impact Analysis Techniques
- ▶ Collaborative Planning & Impact Resolution
- ▶ Red-Zone Planning (Completion Strategies)
- ▶ Contracting Requirements
- ▶ Project Controls
- ▶ 5D Illustrational Planning
- ▶ Communication Strategies
- ▶ Risk Identification
- ▶ Risk Management
- ▶ Claims Avoidance
- ▶ Settlement Conferences

**www.winningcms.com**  
916-509-2291  
Sacramento, CA 95829

**Winning CM Strategies** provides mediation services focused on risk identification and mitigation strategies on large capital construction programs. We provide early dispute resolution, negotiations, and settlement conference services to support programs and project teams as they integrate dispute resolution practices into construction workflows, processes, and contracting agreements.



SBE (Micro)  
SB-PW (Public Works Certification)  
WBE (Suppliers Clearinghouse)  
WBENC (National Council)  
WOSB (SBA.gov)

**REPRESENTATIVE PROJECTS:**



**SMUD East Campus Expansion (\$123M)** LEED Platinum, Net-Zero Utility Campus. Six buildings (six-story office, Emergency Response Center, fleet maintenance, warehouses) and extensive site work (raised 51 acres by 20 feet).



**SMF Airside Terminal B (\$1B)** LEED Silver new construction of international terminal, airside apron improvements, expanded central Terminal B, and 19-gate airside concourse connected by an automated people-mover.



**Golden 1 Center (\$600M)** The Golden 1 Center is the first NBA arena in the world to be certified LEED Platinum by the U.S. Green Building Council; Included Practice Facility, Kaiser Sports Medicine Clinic and Downtown Commons Plaza.



**CA Dept. of Corrections & Rehabilitation (CDCR) (\$2B)** Program delivery support for CDCR Health Care Facility Improvement Program (HCFIP) and Capital Outlay construction programs.



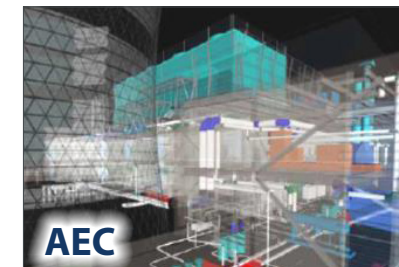
**SFMTA CMGC/DB Radio Replacement Project (\$116M)** PM/CM for this complex facilities retrofit and communication systems upgrade at 16 maintenance facilities and radio frequency sites in San Francisco.



**DGS New Natural Resources HQ (\$520M)** LEED Platinum, Net Zero, 21-story, 838K SF, now houses 3,450 employees. Includes assembly and meeting space, parking, retail, childcare, and commercial food space.



**Stanford Healthcare (\$1.2B)** Renewal project for the Stanford Hospital complex, 824K SF, 368 patient rooms, 20 additional surgery rooms, rooftop garden, and glass-domed atrium entrance.



**DGS Central Utility Plant Renovation (\$181M)** State-of-the-art utility plant replaced a 40-year-old facility, now able to heat and cool 5.5M SF of office space in the Capitol and 23 other State buildings in downtown Sacramento.